



education

DEPARTMENT: EDUCATION
MPUMALANGA PROVINCE

School Infrastructure Development Programme



2011/12

Together Educating the Nation

Mandate



Committed: Mr DD Mabuza, Honourable Premier

“We will continue with all the work that we have already set in motion, coupled with that: We are going to put most of our energies on making all schools to meet their basic minimum functionality level, that is, ensuring that the necessary basic infrastructure is in place, all learners have access to learning support material, and there are enough teachers in each school, including the establishment of proper management systems.

We are also going to pursue our programme of building boarding schools for learners living on farms. We have already completed one such facility in Nkomazi and in the process of completing another in Mkhondo. As I indicated earlier on, we are going to build other three additional boarding facilities, two in Gert Sibande District and one in Nkangala.

We are again appealing to parents of the targeted learners to support government in this endeavour to create a bright future for these children. While we understand that they are quite helpful with family chores, let us allow them to grab this lifetime opportunity and become better leaders of tomorrow.

In addition, government is going to revitalize all boarding facilities that stand empty and decaying with a view that they are utilised for winter and Saturday classes. We are also exploring the possibility of using such facilities to assist child-headed learners from households.

Attention is also going to be paid to children with disabilities. We are going to build facilities for these children so that they too get an opportunity to grow their different potentials. We would like to make an earnest appeal to families having children with disabilities to come forward and afford government an opportunity to assist where it could.

We are, once more, making a call to all of us, to work together in improving the quality of education of our children so that we can build future leaders and a better South Africa. “,

2011 State of the Province Address

Pronouncement

In his State of the Province Address, the Honourable Premier reiterated the urgency required towards addressing Infrastructure backlogs, establishment and construction of boarding schools in Nkangala, two in Gert Sibande and the revitalization of all other boarding schools for utilisation during winter schools.

In the previous financial year, the Department has handed over a number of schools to communities including, Nhayane Secondary School, Lamile Primary School, John Mdluli Primary School, Cyril Clarke Secondary School to mention just a few.

The construction of KaMhlushwa Primary School is complete and soon the school will be officially handed over. There is a need to accelerate the programme for eradicating mud and unsafe schools structures.

I am delighted to announce that there is significant progress in the establishment of four Boarding Schools in the Province. Construction is at an advanced stage for two boarding schools, one at Gert Sibande and another at Ehlanzeni. Planning for a second boarding school in Gert Sibande and one for Nkangala are underway. This will enable children from farms as well as vulnerable children to have suitable living environments conducive to the attainment of quality education. The Department is finalising the recapitalisation of five Technical Secondary Schools. Equally we are planning to recapitalise a further five technical secondary schools.

The Honourable Premier further said in his State of the Province Address: "Attention is also going to be paid to children with disabilities. We are going to build facilities for these children so that they too get an opportunity to grow their different potentials. We would like to make an earnest appeal to families having children with disabilities to come forward and afford government an opportunity to assist where it could.

In this regard, the construction of four Special Schools (Ethokomala at 98%, Pelonolo at 65%, Mantjedi at 20% and Masinakane at 41%) is progressing smoothly to cater for learners with severe disabilities.

Upgrading of seven additional special schools will commence this financial year. This Department has received representation from various sectors about the plight faced by deaf learners in the Province. Currently, our deaf learners have to go outside the Province to



to access secondary education. The Department has resolved to build a comprehensive school for the deaf in the Province. The 2011/12 financial year will be used as the planning and consultation year. To this effect, a task team comprising various stakeholders has been established. It is envisaged that construction will start in the 2012/13 financial year.

There is a dedicated focus to establish a Special School for Multiple Disabilities in Bohlabela District as part of our 2011/12 projects.

Still on school infrastructure for this financial year, the Department has allocated R620 million for infrastructure which includes R65 million for special schools; R29 million for Grade R facilities at public schools; R379 million for the Accelerated School Infrastructure Development Initiative to eradicate mud and unsafe structures and R18 million for recapitalisation of Technical Secondary Schools.

All these initiatives are in line with our quest to ensure that education is accessible to all, and that the environment where learning and teaching is taking place is conducive and welcoming to all learners and teachers. **2011 Policy and Budget Speech**



Implementation

“The Executive Council mandated the Department of Public Works, Roads and Transport to put together a Provincial Infrastructure Master Plan in the previous financial year.

The plan will bring coordination to all infrastructure planning and delivery within the Province. It will also guide the provincial government on identification of infrastructure demands and investment requirements.

This new mandate requires the Department to extend its interaction beyond its traditional client departments (Education, Health, Social Development and Culture Sports & Recreation).

The facilitation will extend to all role players in the infrastructure development.

The completed plan will be aligned to the Mpumalanga Provincial Growth Path and will be updated on a regular basis to ensure relevance to the ever changing socio-economic conditions.

The total number of projects for the DOE in the 2010/2011 financial year were 494 with jobs created amounting to 4 538.

One hundred and forty nine (149) projects were completed in that year, creating 2 543 jobs.

It is envisaged that out of 345 projects planned for the 2011/2012 financial year, 1 995 jobs will be created”.





Nhanyane Secondary School officially handedover on 26 February 2011



KaMhlushwa Primary School will be officially handedover on 30 July 2011



Lamlile Primary School officially handed over on 18 March 2011



John Mdluli Primary School officially handed over on 18 May 2011



Cyril Clarke Secondary School officially handed over on 18 May 2011

Inqubeko Secondary School at Mkhondo Municipality



Inqubeko secondary school is one of the full service schools situated at Thandukukhanya Township. The school was constructed to alleviate overcrowding in schools such as Ndlela and Amadlelo Aluhlaza secondary schools.

Inqubeko Secondary School consists of 28 classes, an administration block, a computer centre; science laboratory, a library, running water and electricity.

R43 million has been allocated for this project and it is expected that the school will be functional by January 2012.

Embracing the 2010 Promise

John Mdluli Primary School



	Old	New
Number of Classes	16	16
Centres	Laboratory, Library, Storeroom	Laboratory, Hall, Library, Computer Centre, Admin Block
Toilets	9	20
Sport Facilities	None	Soccer Fields, 3 Netball Courts,
Extras		Adequate Parking, Rails and Ramps

Nhanyane Secondary School



Nhanyane Secondary School has 16 classrooms; an administration block; a laboratory; a library; a computer centre; a school hall; 24 toilets; fencing; running water; electricity; ramps and rails; three sports grounds and a car park.

Currently, Nhanyane Secondary School caters for 1170 learners (i.e. 635 girls and 535 boys), has 35 educators and four non teaching staff.

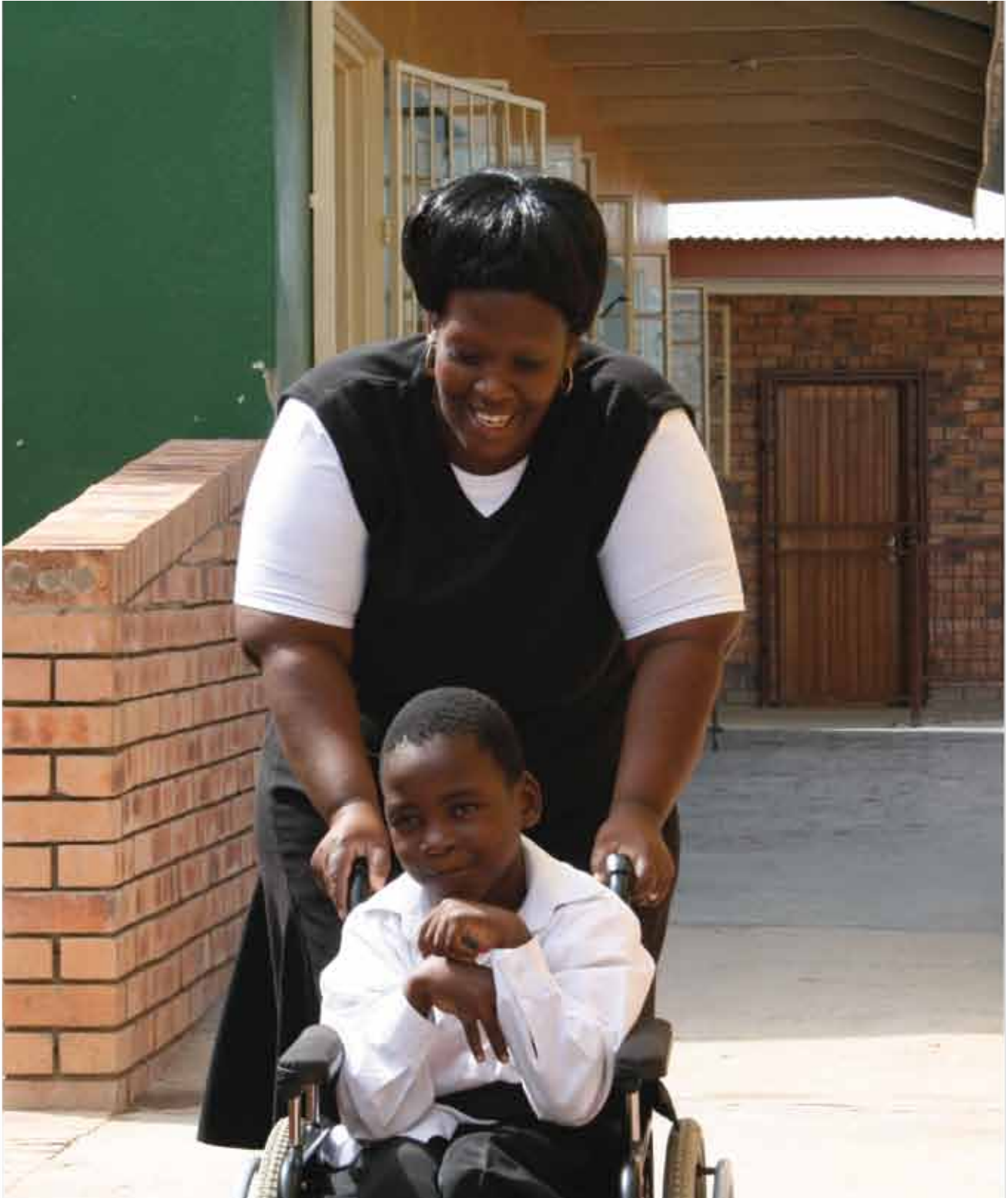
The construction of Nhanyane Secondary School as a fully fledged school is in the view of government an epitome of excellence, good governance and adds impetus on government's rural development strategy.

Special Schools

“Attention is also going to be paid to children with disabilities. We are going to build facilities for these children so that they too get an opportunity to grow their different potentials. We would like to make an earnest appeal to families having children with disabilities to come forward and afford government an opportunity to assist where it could.”

In this regard, the construction of four Special Schools (Ethokomala at 98%, Pelonolo at 65%, Mantjedi at 20% and Masinakane at 41%) is progressing smoothly to cater for learners with severe disabilities.”

2011 Policy and Budget Speech



“The Doors of Education and Culture shall be opened to all”

67 Schools Painted in Honour of Nelson Rolihlahla Mandela

The Mpumalanga Department of Education with its partners will on 16 July 2011 paint, cultivate food & flower gardens in 67 schools to pay tribute to the 67 years of struggle of Nelson Rolihlahla Mandela

Main Events

Date : 16 July 2011 (Saturday)
Venue : Injabulo Primary School
Time : 09H00
Dress Code : Own overalls and tools

Date : 18 July 2011 (Monday)
Venue : Osizweni Special School, Leandra
Time : 09H00
Dress Code : Own overalls and tools



List of Schools:

BOHLABELA DISTRICT		
No.	SCHOOL	CIRCUIT
1	Makwetse Primary	Arthurseat
2	Matsavana	Agincourt
3	Sesete Primary	Cottondale
4	Motlamogale Primary	Casteel
5	Saringwa Primary	Lehukwe
6	Masana Secondary	Dwarsloop
7	Powerline	Greenvalley
8	Mafemane Secondary	Thulamahashe
9	Samson Sibuyi	Manyeleti
10	Sedibeng Primary	Shatale
11	Ntsie Primary	Maviljan
12	Lapishe Primary	Marite
13	Magudu Primary	Ximhungwe
14	Shalamuka Primary	Mkhuhlu
EHLANZENI DISTRICT		
No.	SCHOOL	CIRCUIT
15	Matsamo Primary	Malelane
16	Phindela Primary	Nkomazi West
17	Kamhola Secondary	Barberton
18	Khutsalani Secondary	Insikazi
19	Phakamani	Khulangwane
20	Thambokhulu Primary	Lubombo
21	Marambane	Mashishini
22	Khaliphani Secondary	Mgwenya
23	Tekwane Primary	Mbombela
24	Sibusisiwe Secondary	Nkululeko
25	Thula Primary	Nkomazi East
26	Somcuba Primary	Sikhulile
27	Mgcobaneni Primary	White River
28	Makhosana Secondary	Sabie
29	Ifaletfu	White Hazy
GERT SIBANDE DISTRICT		
No.	SCHOOL	CIRCUIT
30	Nganana Secondary	Amsterdam
31	Makhosonke Primary	Badplaas
32	Bonukukhanya	Balfour
33	Mzinoni Secondary	Bethal
34	Masizakhe Secondary	Breyten
35	Zinikeleni Secondary	Carolina
36	Tsatselani Primary	Dundonald
37	Bashele Primary	Ermelo 1
38	Davel Primary	Ermelo 2
39	Kusasaletu	Highveld Ridge E
40	Chief Ampie Mayisa	Highveld Ridge W
41	Elukwatini Primary	Mashishila
42	Lobhengula Primary	Mpuluzi
43	Kemp Siding Combined	Piet Retief
44	Holmdene Secondary	Staneast
45	Madi Combined	Stanwest
46	Qalani Primary	Wakkerstroom
47	Elangwane Secondary	Volskrust
NKANGALA DISTRICT		
No.	SCHOOL	CIRCUIT
48	Dumelani Primary	KwaMhlanga SW
49	Phuthumani Primary	KwaMhlanga NE
50	Dumelani Secondary	Kwaggafontein W
51	Mgudlwa Secondary	Kwaggafontein E
52	Sofunda Primary	Middelburg 1
53	Eastdene Combined	Middelburg 2
54	Mkhulu Combined	Middelburg 3
55	Thekiso Primary	Nokaneng
56	Manoka Primary	Mmametlhake
57	Dikgabo Primary	Marapyane
58	Mandlethu Secondary	Tweefontein N
59	Vukuzenzele FET	Tweefontein S
60	Kopanang Secondary	Emalahleni 1
61	Mapule Sindane	Emalahleni 2
62	Bonginhlahlala	Emalahleni 3
63	Thembeke Primary	Siyabuswa
64	Thululwazi Secondary	Weltevrede
65	Dumezizweni	Waterval Boven
66	Ukuphumulakwesizwe	Libangeni
67	Phaphamani Secondary	Delmas



education
DEPARTMENT: EDUCATION
MPUMALANGA PROVINCE



EHLANZENI FET COLLEGE



MPUMALANGA
A Pioneering Spirit

Kamhlushwa Schools

This is a state of the art school situated in Kamhlushwa Village at Inkomazi Municipality and is a full service school.

It consists of 24 Classes, library, computer centre, administration block, sport facilities for soccer, netball and valley ball, running water, electricity and is fenced.

It currently caters for 872 learners, 21 educators, 02 Non-teaching Staff and a principal.

It is going to alleviate overcrowding in the surrounding schools such as Hoescht Primary.



List of planned 2011/12 School Infrastructure Programmes

Alex Benjamin	Nkangala	Ikhwezi	Gert Sibande
Alexandria	Bohlabela (Ehlanzeni)	Imizamoyethu	Gert Sibande
Amadlelo	Gert Sibande	Inhlanhlaleyo (new)	Ehlanzeni
Amersfoort	Gert Sibande	Injabulo	Gert Sibande
Amon Nkosi	Ehlanzeni	Inkomazi	Ehlanzeni
Arnot Colliery	Nkangala	Inqubeko	Gert Sibande
Azalea	Gert Sibande	Isibanesesizwe	Gert Sibande
Barney	Bohlabela (Ehlanzeni)	Isifisosethu	Gert Sibande
Bazani	Nkangala	Jabulani	Nkangala
Bhekokuhle	Gert Sibande	Jackie Manana (New)	Gert Sibande
Bombani	Bohlabela (Ehlanzeni)	Jim van Tonder	Gert Sibande
Bongani	Nkangala	John Mdluli	Ehlanzeni
Boschfontein	(Ilanga/ new) Ehlanzeni	Kabete	Nkangala
Buhlebemfundo	Nkangala	Kallie de Haas	Gert Sibande
Buyisonto	Bohlabela (Ehlanzeni)	Kamhlushwa	Ehlanzeni
Cangasa	Gert Sibande	Khayelitjha	Nkangala
Catfulani	Ehlanzeni	Khombindlela	Ehlanzeni
Chakaza	Ehlanzeni	Khulangelwazi	Nkangala
Chayaza	Bohlabela (Ehlanzeni)	Khunjuliwe	Gert Sibande
Chief Charles	Ehlanzeni	KI Thwala	Gert Sibande
Chief Luthuli	Nkangala	Kiriyatshwane	Gert Sibande
Chueu (additions)	Bohlabela (Ehlanzeni)	Klipspruit Combined	Nkangala
Cyril Clarke	Ehlanzeni	Klipstapel	Gert Sibande
DD Mabuza	Ehlanzeni	Kobi	Ehlanzeni
Dilayi	Bohlabela (Ehlanzeni)	Kriel	Nkangala
Ditau	Bohlabela (Ehlanzeni)	KwaJelusa	Ehlanzeni
Dumphries	Bohlabela (Ehlanzeni)	Kwalodakada	Ehlanzeni
Ebuhleni (New)	Ehlanzeni	KwetseBohlabela	Ehlanzeni
Eckson Masotja	Bohlabela (Ehlanzeni)	Laerskool Ellof	Nkangala
Elusindisweni	Nkangala	Laerskool Ermelo	Gert Sibande
Emfundweni	Nkangala	Laerskool Lydenburg	Ehlanzeni
Enkokhokweni	Ehlanzeni	Laerskool CR Swart	Nkangala
Enkundleni	Gert Sibande	Langa Bohlabela	Ehlanzeni
Evimbilanga	Ehlanzeni	Langelibalele	Nkangala
Frank Maghinyane	Bohlabela (Ehlanzeni)	Langelooop (new)	Ehlanzeni
Freddy Sithole	Bohlabela (Ehlanzeni)	Lefiswane	Nkangala
Fundughubeka	Gert Sibande	Lekazi	Ehlanzeni
Gebhuza	Ehlanzeni	Liguguletfu	Ehlanzeni
GSkool Hendrina	Nkangala	Lugedlane	Ehlanzeni
Gijimani	Nkangala	Lundanda	Ehlanzeni
Glen Eland	Gert Sibande	Lydenburg	Ehlanzeni
Gutjwa	Ehlanzeni	M.L Nkuna	Bohlabela (Ehlanzeni)
Harmony Hill	Ehlanzeni	Madile Bohlabela	Ehlanzeni
Hlalisani	Nkangala	Magabotse	Bohlabela (Ehlanzeni)
Hlangalezwe	Bohlabela (Ehlanzeni)	Magewu	Ehlanzeni
Hlangalezwe	Bohlabela (Ehlanzeni)	Magigwana	Bohlabela (Ehlanzeni)
Hlelimfundo	Gert Sibande	Mahashe	Bohlabela (Ehlanzeni)
Hluvukani	Bohlabela (Ehlanzeni)	Mahlahluvana	Bohlabela (Ehlanzeni)
Hoechst	Ehlanzeni	Mahlale	Bohlabela (Ehlanzeni)
Holdesheim	Gert Sibande	Mahlekisana	Bohlabela (Ehlanzeni)
Hosana	Gert Sibande	Mahushe / Shayaza	Ehlanzeni
HTS Witbank	Nkangala	Majika	Ehlanzeni
Idlangemabala	Ehlanzeni	Makorompane	Bohlabela (Ehlanzeni)

Mahushe / Shayaza	Ehlanzeni	Mzinti	Ehlanzeni
Majika	Ehlanzeni	Ndedema Primary	Nkangala
Makorompane	Bohlabela (Ehlanzeni)	Ndlavela	Ehlanzeni
Makwetse	Bohlabela (Ehlanzeni)	Ndlela	Gert Sibande
Mandlakababa	Nkangala	Nghunghunyane	Bohlabela (Ehlanzeni)
Mandondo	Bohlabela (Ehlanzeni)	Nhlazatshe	Gert Sibande
Mantwana	Nkangala	NJ Mahlangu	Ehlanzeni
Manyangana	Bohlabela (Ehlanzeni)	Njanji	Bohlabela (Ehlanzeni)
Maphuthaditshaba	Bohlabela (Ehlanzeni)	Njonjela	Bohlabela (Ehlanzeni)
Mapondo	Nkangala	Nkangala Boarding	Nkangala
Marongwane	Bohlabela (Ehlanzeni)	Nkotobona	Bohlabela (Ehlanzeni)
Masibonisane	Ehlanzeni	Nkwenkwezi	Bohlabela (Ehlanzeni)
Maswameni	Bohlabela (Ehlanzeni)	Nokuthula	Gert Sibande
Mathule	Bohlabela (Ehlanzeni)	Ntsie	Bohlabela (Ehlanzeni)
Matikwana	Bohlabela (Ehlanzeni)	Ntsoelemolodi	Bohlabela (Ehlanzeni)
Matjeni	Ehlanzeni	Nwamacingele	Bohlabela (Ehlanzeni)
Mavimbela	Bohlabela (Ehlanzeni)	Orhovelani	Bohlabela (Ehlanzeni)
Mawuvana	Bohlabela (Ehlanzeni)	Peter Mokaba	Nkangala
Maziya	Nkangala	Phambanisa	Ehlanzeni
Mbhandule	Bohlabela (Ehlanzeni)	Phembindlela	Gert Sibande
Mbombo	Ehlanzeni	Phindela	Ehlanzeni
MD Coovadia	Gert Sibande	Phiva	Ehlanzeni
Mdladla	Ehlanzeni	Phuthumani	Nkangala
Mdluli	Bohlabela (Ehlanzeni)	Poolzee	Nkangala
Mdumiseni Primary	Nkangala	Powerline	Bohlabela (Ehlanzeni)
Mehlobomvu	Ehlanzeni	Pugishe	Bohlabela (Ehlanzeni)
Mehlwemamba	Gert Sibande	Qhubulwazi	Gert Sibande
Memezile	Ehlanzeni	Ramabale	Nkangala
Mhlagazane	Gert Sibande	Sabeka	Bohlabela (Ehlanzeni)
Mhlangana	Bohlabela (Ehlanzeni)	Sakhisizwe	Gert Sibande
Mhlume	Ehlanzeni	Schoemansdal	Ehlanzeni
Middelburg	Nkangala	Sebosegolo Sa Mapulana	Bohlabela (Ehlanzeni)
Milliken	Gert Sibande	Sekusile	Ehlanzeni
MjeJane	Ehlanzeni	Senzangakhona	Nkangala
Mkhanyo	Nkangala	Shaga	Ehlanzeni
Mkhomazi	Gert Sibande	Shapeve	Gert Sibande
Mlilo Combined	Gert Sibande	Shayaza	Ehlanzeni
Mmabatho Mokoena	Bohlabela (Ehlanzeni)	Shinyukane	Ehlanzeni
Mogolane	Bohlabela (Ehlanzeni)	Sibhulo	Ehlanzeni
Moratiseng	Bohlabela (Ehlanzeni)	Sibongamandla	Nkangala
Moses Mnisi	Bohlabela (Ehlanzeni)	Sibongile	Ehlanzeni
Mothaileng	Bohlabela (Ehlanzeni)	Sibongimpumelelo	Nkangala
Motoaneng	Nkangala	Sibongiseni (new)	Ehlanzeni
Mountain View	Ehlanzeni	Siboyiye	Bohlabela (Ehlanzeni)
Mphoti	Ehlanzeni	Sibuyile	Ehlanzeni
Mpisane	Bohlabela (Ehlanzeni)	Sigweje	Ehlanzeni
Mpunzane	Ehlanzeni	Sihlangu	Ehlanzeni
Mthembeni	Bohlabela (Ehlanzeni)	Sihlengiwe	Nkangala
Mthunzi	Ehlanzeni	Sikhwahlane	Ehlanzeni
Mugena	Bohlabela (Ehlanzeni)	Siphumelele	Nkangala
Mvuzo	Nkangala	Siphumule	Nkangala
Mzangedwa	Bohlabela (Ehlanzeni)	Sisini	Ehlanzeni
Mzimhlophe	Nkangala	Sizabantwana	Nkangala

Sizamile	Nkangala	Goba	Ehlanzeni
Sizile	Nkangala	Greenvalley	Bohlabela (Ehlanzeni)
Sizuzile	Nkangala	Hlau Hlau	Ehlanzeni
Skapandoda Mashabiya	Bohlabela (Ehlanzeni)	Hlobisa	Gert Sibande
Somcuba	Ehlanzeni	Hoërskool Lydenburg	Ehlanzeni
Songeni	Bohlabela (Ehlanzeni)	Ikhethelo	Gert Sibande
Springvalley	Nkangala	Kalkoenkrans	Gert Sibande
Swelihle	Gert Sibande	Kgantsho B	Nkangala
Tekwane	Ehlanzeni	Khula - Mshika	Ehlanzeni
Thabang	Nkangala	Khulufunde	Nkangala
Thanduxolo Special	Nkangala	King Makhosonke	Nkangala
Thistle Grove	Gert Sibande	Lekete	Bohlabela (Ehlanzeni)
Tholulwazi	Gert Sibande	Lugebhuta	Ehlanzeni
Thulani	Bohlabela (Ehlanzeni)	Madola	Gert Sibande
Thulani	Nkangala	Makopanong A	Nkangala
Thuthukazulu	Gert Sibande	Makopanong C	Nkangala
Thwahlele	Gert Sibande	Malontone	Nkangala
Tikhuni	Ehlanzeni	Mandlesive	Ehlanzeni
Tjhidelani	Nkangala	Mantjedi Special	Nkangala
Tongaview	Ehlanzeni	Manukuse	Bohlabela (Ehlanzeni)
Trichardsfontein	Gert Sibande	Masinakane Special	Nkangala
Tsakane Inclusive	Bohlabela (Ehlanzeni)	Mbatini	Bohlabela (Ehlanzeni)
Twyfelhoek Boarding	Gert Sibande	Mbongeni	Ehlanzeni
Umlambo	Gert Sibande	Mbuzini	Ehlanzeni
Umpilusi	Gert Sibande	Methula	Gert Sibande
Valencia	Ehlanzeni	Mgudlwa	Nkangala
Vulamasango	Ehlanzeni	MM Motloung S	Nkangala
Waburton	Gert Sibande	MO Mashego	Bohlabela (Ehlanzeni)
Wesselton	Gert Sibande	Moniwa	Nkangala
Ximoyi Khosa	Bohlabela (Ehlanzeni)	Moodies	Ehlanzeni
Zakhele	Nkangala	Morage	Bohlabela (Ehlanzeni)
Zenzeleni	Nkangala	Mpilonhle	Nkangala
Zibokwane	Ehlanzeni	Mvuyazi	Bohlabela (Ehlanzeni)
Zigode	Bohlabela (Ehlanzeni)	New Ermelo	Gert Sibande
Zithulele	Ehlanzeni	Norden	Gert Sibande
Zizameleni	Gert Sibande	Nsephe	Gert Sibande
Baadjesbult	Gert Sibande	Ntababomvu	Gert Sibande
Babutheni	Nkangala	Shongwe Teacher Centre	Ehlanzeni
Blesbokspruit	Gert Sibande	Pelonolo Special	Nkangala
Boikhutso	Bohlabela (Ehlanzeni)	Peter Mokaba	Nkangala
Bongokuhle	Ehlanzeni	Phelwane	Nkangala
Broadholm	Gert Sibande	Phendulani	Bohlabela (Ehlanzeni)
Buyisonto	Bohlabela (Ehlanzeni)	Qedudlame	Nkangala
D & C	Gert Sibande	Ramodieggi B	Nkangala
Delpark	Nkangala	Shishila	Ehlanzeni
Ditlhokwe	Nkangala	Shukuma B	Gert Sibande
Driepan	Gert Sibande	Sidlemu	Ehlanzeni
Ekuphileni B	Gert Sibande	Sijabulile	Ehlanzeni
Ethokomala Special	Gert Sibande	Sinqobile	Ehlanzeni
FH Mkhabela	Nkangala	Sitanani	Gert Sibande
Gebhundlovu	Ehlanzeni	Siyafundza	Ehlanzeni
Geduld	Gert Sibande	Sizenzele	Gert Sibande
Germans Chiloane	Bohlabela (Ehlanzeni)	Sizofunda	Nkangala

Soshangane	Bohlabela (Ehlanzeni)	Glenthorpe	Ehlanzeni
SS Mshayisa	Gert Sibande	Hazyview Comprehensive	Ehlanzeni
The Brook	Gert Sibande	Highveld Comprehensive	Gert Sibande
Tsandzanani	Ehlanzeni	Hlomani	Bohlabela (Ehlanzeni)
Tshepeha	Gert Sibande	Hoërskool Balfour	Gert Sibande
Vulamehlo	Nkangala	Hoërskool Kriel	Nkangala
Vulindlela	Gert Sibande	Hoërskool Middelburg	Nkangala
Vulingcondvo	Gert Sibande	Humulani	Bohlabela (Ehlanzeni)
Vuyelani	Bohlabela (Ehlanzeni)	Ifaletfu	Ehlanzeni
Wolvenkop Special	Nkangala	Ikageleng	Nkangala
Xanthia	Bohlabela (Ehlanzeni)	Imbondveo	Gert Sibande
Xinyeketi	Bohlabela (Ehlanzeni)	Ingwenyama	Ehlanzeni
Zikhuphule	Nkangala	Injabulo	Ehlanzeni
Amanzi	Gert Sibande	Isibanesezwe	Gert Sibande
Amsterdam Boarding	Gert Sibande	Ithafa Comprehensive	Gert Sibande
Arnot	Nkangala	Itireleng	Nkangala
Bambanani	Ehlanzeni	Johannes Kananda	Nkangala
Barberton	Ehlanzeni	Khangela	Nkangala
Basizeni	Gert Sibande	Khetsalwati	Ehlanzeni
Bazenzele	Gert Sibande	Khula	Ehlanzeni
Bekezela	Gert Sibande	Klipspriger Primary	Ehlanzeni
Bekezela	Nkangala	Kwakwari	Nkangala
Bekezela	Nkangala	Laerskool Barberton	Ehlanzeni
Beng Ba Lona	Bohlabela (Ehlanzeni)	Laerskool Bosfontein	Ehlanzeni
Bkekiswako	Ehlanzeni	Landulwazi	Gert Sibande
Bondzeni	Bohlabela (Ehlanzeni)	Langa	Bohlabela (Ehlanzeni)
Bonginhlanhla	Nkangala	Lefiso	Nkangala
Buffelshoek Secondary	Bohlabela (Ehlanzeni)	Lekelelani	Gert Sibande
Bushbuckridge	Bohlabela (Ehlanzeni)	Lekholane	Nkangala
Bushbuckridge	Bohlabela (Ehlanzeni)	Lethipele	Bohlabela (Ehlanzeni)
Buyani A	Gert Sibande	Ligbron	Gert Sibande
Carolina Academy	Gert Sibande	Louwville	Ehlanzeni
Celani	Ehlanzeni	Lovunywa	Gert Sibande
Chief Makunyula	Ehlanzeni	Mabande	Nkangala
DD Mabuza Comprehensive	Ehlanzeni	Mabhoko	Nkangala
Dumphries	Bohlabela (Ehlanzeni)	Madzuma	Bohlabela (Ehlanzeni)
Duvha	Nkangala	Mahlatsi	Ehlanzeni
Ekuphakameni	Nkangala	Mahlose	Gert Sibande
Elukhanyisweni Secondary	Nkangala	Mantwani	Nkangala
Eluyengweni	Gert Sibande	Masizakhe	Gert Sibande
Emfuleni	Bohlabela (Ehlanzeni)	Mathalaza	Gert Sibande
Emtfuntini	Ehlanzeni	Mathipe	Ehlanzeni
Esigangeni	Gert Sibande	Mathupe	Ehlanzeni
Etshondo	Gert Sibande	Matsulu	Ehlanzeni
Ezenzele	Gert Sibande	Maviljan	Bohlabela (Ehlanzeni)
Frank Maghinyane	Bohlabela (Ehlanzeni)	Mawewe	Ehlanzeni
Gedlembane	Ehlanzeni	Mayflower	Gert Sibande
Gezingqondo	Bohlabela (Ehlanzeni)	Mdzimba	Ehlanzeni
Glenthorpe	Ehlanzeni	Mgcobaneni	Ehlanzeni
Hazyview Comprehensive	Ehlanzeni	Mhlume	Ehlanzeni
Highveld Comprehensive	Gert Sibande	Mhola	Ehlanzeni
Hlomani	Bohlabela (Ehlanzeni)	Mlilo	Ehlanzeni
Hoërskool Balfour	Gert Sibande	Mmametlhake	Nkangala

Mmametlhake	Nkangala	Sizimisele (Ph 1)	Ehlanzeni
Moduping	Bohlabela (Ehlanzeni)	Sizuzile	Nkangala
Mogobosheng	Nkangala	Sohlazane	Gert Sibande
Mokebe	Nkangala	Sokapho	Nkangala
Molapalama	Nkangala	Steenbok	Ehlanzeni
Mooibank	Gert Sibande	Syde	Gert Sibande
Morage	Bohlabela (Ehlanzeni)	Tenteleni	Ehlanzeni
Moses Mnisi	Bohlabela (Ehlanzeni)	Thandanani	Nkangala
Mphanama Comprehensive	Nkangala	Thandeka	Gert Sibande
Mphephethe	Nkangala	Thekiso	Nkangala
Mphoti	Ehlanzeni	Thomas Percy Sililo	Nkangala
Mpilonhle	Nkangala	Thwasani	Bohlabela (Ehlanzeni)
Mpisi	Bohlabela (Ehlanzeni)	Tiboneleni	Ehlanzeni
Msogwaba	Ehlanzeni	Twyfelhoek	Gert Sibande
Mthayiza	Ehlanzeni	Ubuhle	Gert Sibande
Mthombeni	Nkangala	Umlambo	Gert Sibande
Mugidi	Bohlabela (Ehlanzeni)	Versailles	Ehlanzeni
Musi	Nkangala	Vezimfundo	Nkangala
Mzilikazi	Bohlabela (Ehlanzeni)	Vumazonke	Nkangala
Mzimba	Bohlabela (Ehlanzeni)	Vygeboom	Gert Sibande
Ndabeni	Bohlabela (Ehlanzeni)	W De Klerk Special	Nkangala
New Coronation	Nkangala	Wesselton	Gert Sibande
Ngwaritsane	Bohlabela (Ehlanzeni)	White River	Ehlanzeni
Nhanyane	Ehlanzeni	Zakheleni	Ehlanzeni
Njeyeza	Ehlanzeni	Zinikeleni Secondary	Gert Sibande
Nyalunga	Ehlanzeni	Baadjiesbult Primary	Gert Sibande
Osizweni	Gert Sibande	Bambanani Primary	Ehlanzeni
Phaphama	Bohlabela (Ehlanzeni)	Barney Primary	Bohlabela (Ehlanzeni)
Phaphamani	Gert Sibande	Bazenzele Primary	Gert Sibande
Phola	Ehlanzeni	Bhekimfundo Primary	Nkangala
Platorand Special	Nkangala	Bohlabela District	Bohlabela (Ehlanzeni)
Prof SS Ripinga	Ehlanzeni	Bondzeni Primary	Bohlabela (Ehlanzeni)
Ramoshidi	Nkangala	Buhlebemfundo Primary	Nkangala
Ratlhahana	Nkangala	Bushbuckridge Secondary	Bohlabela (Ehlanzeni)
Relani	Bohlabela (Ehlanzeni)	Celani	Ehlanzeni
Remhoogte	Gert Sibande	Chief Charles Secondary	Ehlanzeni
Rev SA Nkosi	Gert Sibande	Chief Makunyula Combined	Ehlanzeni
Sakhile	Ehlanzeni	Comprehensive Twyfelhoek	Gert Sibande
Salubindza	Ehlanzeni	Cyril Clarke Secondary	Ehlanzeni
Samuel Mhlanga	Bohlabela (Ehlanzeni)	Drieapan Primary	Gert Sibande
Sandzile	Ehlanzeni	Dumphries Secondary	Bohlabela (Ehlanzeni)
Schulzendal	Ehlanzeni	Ehlanzeni District	Ehlanzeni
Seabe	Nkangala	Emfundweni Primary	Nkangala
Sebenta	Gert Sibande	Emjindini	Ehlanzeni
Shatlang	Bohlabela (Ehlanzeni)	Emthonjeni	Nkangala
Shobiyana	Bohlabela (Ehlanzeni)	Enkonjaneni	Gert Sibande
Sibambisene	Ehlanzeni	GSkool Hendrina	Nkangala
Sicelosethu	Ehlanzeni	Gezingqondo Secondary	Bohlabela (Ehlanzeni)
Silindokuhle	Ehlanzeni	Gunwana	Gert Sibande
Sincobile	Ehlanzeni	Harmony Hill Primary	Ehlanzeni
Siphumelele	Nkangala	Hlobisa Primary	Gert Sibande
Siyamukela	Ehlanzeni	Hoërskool Kriel	Nkangala
Sizakhele	Gert Sibande	Hoërskool Lydenburg	Bohlabela (Ehlanzeni)

Hoërskool Middelburg	Nkangala	ML Nkuna Secondary	Bohlabela (Ehlanzeni)
Hosana Primary	Gert Sibande	Mmametlhake Secondary	Nkangala
HTS Witbank	Nkangala	Mogobosheng Secondary	Nkangala
Isibanesesizwe Combined	Gert Sibande	Mokebe Secondary	Nkangala
Isu Elihle Primary	Gert Sibande	Motoaneng Primary	Nkangala
Ithafa Comprehensive	Gert Sibande	Mountain View Primary	Ehlanzeni
Ithole	Gert Sibande	Mphoti Primary	Ehlanzeni
Jabulani Primary	Nkangala	Mpilonhle Primary	Nkangala
Jim van Tonder Special	Gert Sibande	Msogwaba Primary	Ehlanzeni
John Mdluli Primary	Ehlanzeni	Musi Primary	Nkangala
Kalkoenkrans Primary	Gert Sibande	Mzangedwa Primary	Bohlabela (Ehlanzeni)
Kamhlushwa Primary	Ehlanzeni	Mzimba Secondary	Bohlabela (Ehlanzeni)
Kgantsho Primary	Nkangala	Ncakini	Ehlanzeni
Khulufunde Primary	Nkangala	Ndedema Primary	Nkangala
Khunjuliwe Secondary	Gert Sibande	Ngwaritsane Primary	Bohlabela (Ehlanzeni)
KI Thwala Secondary	Gert Sibande	Njeyeza Primary	Ehlanzeni
Klarinet Primary 1	Nkangala	Nkangala District	Nkangala
Kopanang	Nkangala	Nkotobona Secondary	Bohlabela (Ehlanzeni)
Kwandebele Science	Nkangala	Norden Primary	Gert Sibande
Laerskool Ellof	Nkangala	Ntababomvu Primary	Gert Sibande
Laerskool Lydenburg	Bohlabela (Ehlanzeni)	Ntsie Primary	Bohlabela (Ehlanzeni)
Laerskool CR Swart	Nkangala	Nwamacingele Primary	Bohlabela (Ehlanzeni)
Langa Secondary	Bohlabela (Ehlanzeni)	Pelonolo Special	Nkangala
Lekanang	Bohlabela (Ehlanzeni)	Peter Mokaba Primary	Nkangala
Lekelelani Primary	Gert Sibande	Phambanisa Primary	Ehlanzeni
Lekete Secondary	Bohlabela (Ehlanzeni)	Phelwane Primary	Nkangala
Lethipele Secondary	Bohlabela (Ehlanzeni)	Poolzee Combined	Nkangala
Loti	Ehlanzeni	Powerline Primary	Bohlabela (Ehlanzeni)
Lundanda Combined	Ehlanzeni	Ramabale Primary	Nkangala
Lydenburg Primary	Bohlabela (Ehlanzeni)	Ramoshidi Secondary	Nkangala
Madzuma Secondary	Bohlabela (Ehlanzeni)	Ratlhahana Secondary	Nkangala
Magogeni Primary	Ehlanzeni	Relani Primary	Bohlabela (Ehlanzeni)
Magwagwaza	Bohlabela (Ehlanzeni)	Rorobane	Nkangala
Mahashe	Bohlabela (Ehlanzeni)	Sakhile Primary	Nkangala
Mahlale Secondary	Bohlabela (Ehlanzeni)	Sakhisizwe Primary	Gert Sibande
Mahlekisana Primary	Bohlabela (Ehlanzeni)	Sebosegolo Sa M Primary	Bohlabela (Ehlanzeni)
Mantjedi Special	Nkangala	Sehlakabye	Bohlabela (Ehlanzeni)
Mantwani	Nkangala	Senzangakhona Secondary	Nkangala
Manyangana Secondary	Bohlabela (Ehlanzeni)	Setsheng	Gert Sibande
Masinakane Special	Nkangala	Shapeve Primary	Gert Sibande
Matjeni Primary	Ehlanzeni	Siphakamile	Gert Sibande
Matsafeni	Ehlanzeni	Sitanani Primary	Gert Sibande
Maviljan Primary	Bohlabela (Ehlanzeni)	Sizamile Primary	Nkangala
MD Coovadia Primary	Gert Sibande	Sizimisele Primary	Ehlanzeni
Mdluli Secondary	Bohlabela (Ehlanzeni)	Sizofunda Secondary	Nkangala
Mdumiseni Primary	Nkangala	Sokapho Primary	Nkangala
Mehlwana	Nkangala	Somcuba Primary	Ehlanzeni
Memezile Secondary	Ehlanzeni	Songeni Primary	Bohlabela (Ehlanzeni)
Middelburg Primary	Nkangala	Springvalley Primary	Nkangala
ML Nkuna Secondary	Bohlabela (Ehlanzeni)	Steenbok Secondary	Ehlanzeni
Mmametlhake Secondary	Nkangala	Swelihle Primary	Bohlabela (Ehlanzeni)
Mogobosheng Secondary	Nkangala	Tekwane South Secondary	Ehlanzeni
Mokebe Secondary	Nkangala	Thabang Primary	Nkangala

The Brook Primary
Thekiso Primary
Thomas Percy Sililo
Thulane Primary
Thulani Primary
Thwasani Primary
Tjhidelani Primary
Versailles Primary
Vezimfundo Primary
Vulingcondvo Primary
Wesselton Secondary
Ximoyi Khosa Secondary
Zigode Primary
Zwelisha

Gert Sibande
Nkangala
Nkangala
Bohlabela (Ehlanzeni)
Nkangala
Bohlabela (Ehlanzeni)
Nkangala
Bohlabela (Ehlanzeni)
Nkangala
Gert Sibande
Gert Sibande
Bohlabela (Ehlanzeni)
Bohlabela (Ehlanzeni)
Ehlanzeni

Mobile Classrooms



The Department has already procured 93 mobile classrooms to mitigate against challenges of storm damaged schools.

These classes will rove from one area to another depending on the need.

R 18 million has been set aside to achieve this endeavour.

Boarding Schools

The Department has moved with speed in establishing boarding schools to cater for vulnerable children and to ensure that these children are exposed to better living conditions as well as quality education.

Gert Sibande District Driefontein/ Twyfelhoek

The boarding school in Driefontein next to Twyfelhoek is currently under construction. It consists of 24 classrooms, four centres, kitchen, laundry, a hall and residence facilities for boys and girls.

Six small multi grade schools are going to be closed to give way to this boarding school. These schools are Mooibank, Bazenzele, Edelsteen, Twyfelhoek, Mahlose and Siyathemba Girls.

It is estimated that the first intake will be about 1 000 learners and every effort is being put in place to ensure that it is functional in January 2012.

Amsterdam

A site has already been secured for a boarding school in Amsterdam. Planning and design has already commenced and it is envisaged that construction may commence in the 2012/13 financial year.

R20 million has been set aside for the commencement of this construction.

Ehlanzeni District Driekoppies

A lot of ground has been covered in the construction of this boarding school. Driekoppies boarding school already boasts 18 classrooms; four centres; residence facilities and a hall.

A laundry facility is to be constructed within this financial year. R1.7 million is set aside for the completion of this project in this financial year.

Nkangala District

A site has already been secured for a boarding school for the Nkangala District at Emakhaseni Municipality. Construction is expected to commence by 2012/13.

R20 million has been allocated for this project.

Boarding Schools



Vezimfundo Primary School, Delmas



Vezimfumdo Primary school is situated in Delmas extension 6 at Victor Khanyi Municipality.

It will alleviate overcrowding in Sizule, Mdumiseni, Dumezweni, Khangela, Othandweni and Bazani Primary Schools.

It consists of 24 classrooms, a kitchen, multipurpose centers, adequate toilets, a hall, running water and electricity.

R34 million was set aside to build this school.

It is envisaged that the Department will officially open it in September 2011.

Contact Details

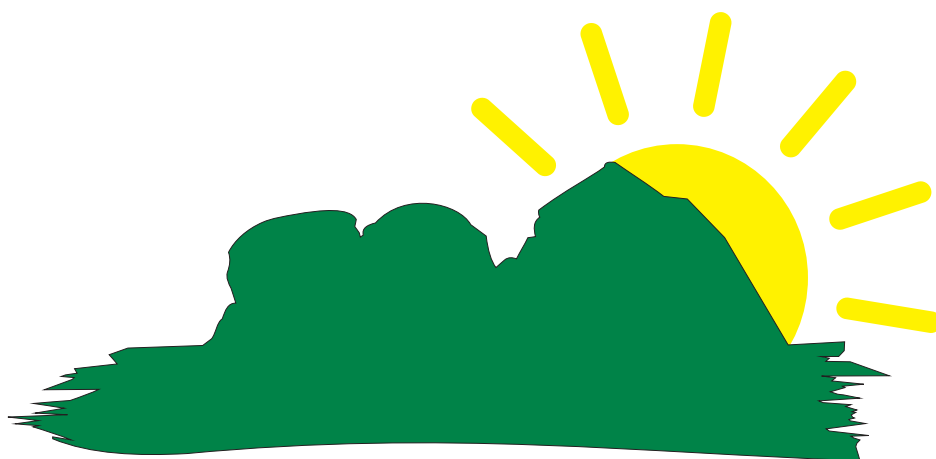
For more information on Infrastructure Development, please contact the following officials:

Department of Education

Mr. CJA Kajeni	013 766 5274	Head Office
Mr. LB Masango	013 766 5437	Head Office
Mr. M Phenyane	013 708 5000	Bohlabela District
Mr. ZL Mhlanga	013 766 0576	Ehlanzeni District
Mr. DM Phungwayo	017 801 5223	Gert Sibande District
Mr. R V Ndimande	013 947 1512	Nkangala District

Department of Public Works, Roads and Transport

Ms. A Majova	013 766 6844	Head Office
--------------	--------------	-------------



MPUMALANGA
A Pioneering Spirit



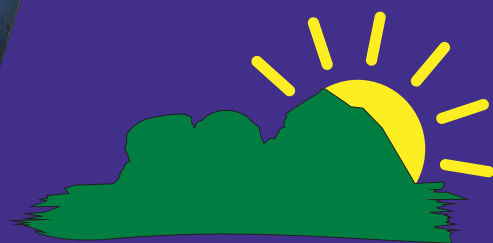
education

DEPARTMENT: EDUCATION
MPUMALANGA PROVINCE

Compulsory Schooling Campaign

Hi, I am Mpumi Lephoko, Ms Mpumalanga 2011. I am what I am today because I went to school and respected my parents and teachers.

DON'T drop out of school!



MPUMALANGA
A Pioneering Spirit

Let us all make an effort to ensure that all children of school going age (between 7 -15) attend school and learn every school day.
Contact the Department at **0800 203 116** to report children not attending school

Together Educating the Nation